

ZapApp® for Windows Installation

Version 2.5.9.424 – present

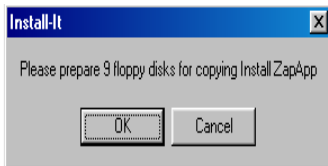
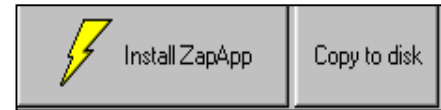


Part 1 – Stand Alone Installation

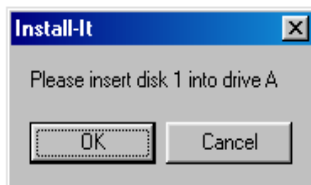
1. Insert the CD into the CD-Rom drive.
2. The CD should start automatically. If it does not, click **Run**. Enter your CD-Rom's drive letter followed by **Install.exe**. For example: Type **D:\Install.exe**, then click **Ok**



3. After a few seconds, you will see the *American Driving Records Install-It* screen. Carefully read the information displayed in the window, then select your option.
Note: If you have a CD-Rom on all PC's please skip to step 7
If you have a CD-Rom proceed with "Install ZapApp"

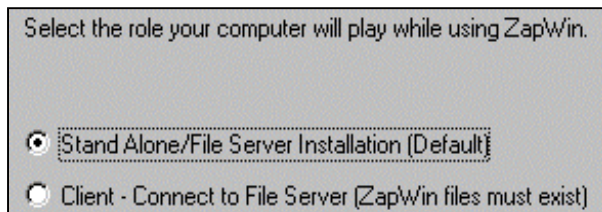


4. If you do not have a CD-Rom on all your workstation, you will need to **create Floppy Disks**. Select the **Copy to Disk** icon and it will prompt you to prepare **Floppy Disks**. Note: The floppy disks will be used for installation on the remainder of your workstations without a CD-Rom. You will be prompted to **insert** each floppy disk, until completion.



5. After the Floppy diskettes have been created, place the first diskette into the floppy drive. Click the Start Button and click **Run**. Type **A:\Setup.exe** then click **Ok**. The will initiate the Installation process.

6. After a few seconds, you will see the *Welcome Screen*. Read the information displayed in the window, then click **Next** when you are ready to proceed with the installation.
7. The Select Components screen will appear. **Important: Most users will need to select the "Stand Alone/File Server Installation."** The "Client – Connect to File Server" installation is only used as part of a network installation of ZapApp® for Windows. Information concerning the "Client" installation can be found on Part 2 of these instructions. Click Next to continue the installation.

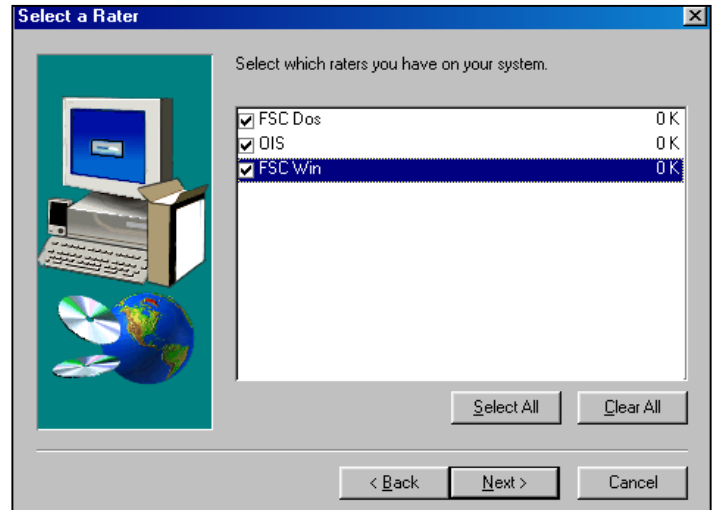


8. Setup will now prompt you to choose the destination directory in where to install ZapApp® for Windows. By default it will install to your local drive, unless otherwise specified. Note: If you are installing to a File Server see the **Part 2, Client – Connect to File Server**, portion. Click **Next to Continue**.

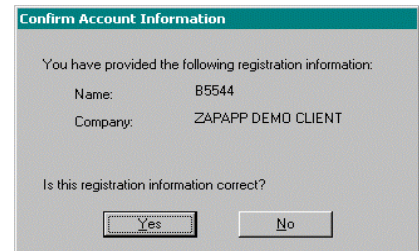


9. Setup will now ask you to specify the Rater that you are using by prompting you with **“Select a Rater”**. Select the Rater, which you wish to use and click **Next**.
10. Setup will now ask you to specify the location of your Rater.
 - If your Rater is installed on your local drive, click Next to continue.
 - If your Rater is installed in another location, click **Browse** and specify the correct location.

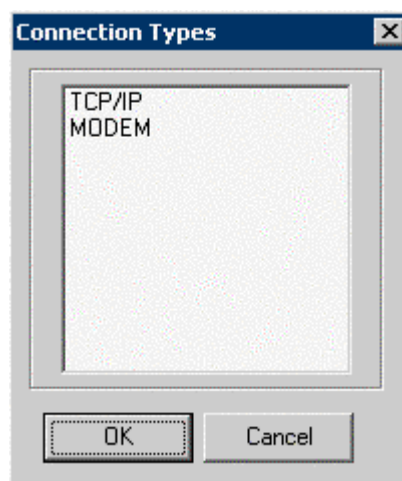
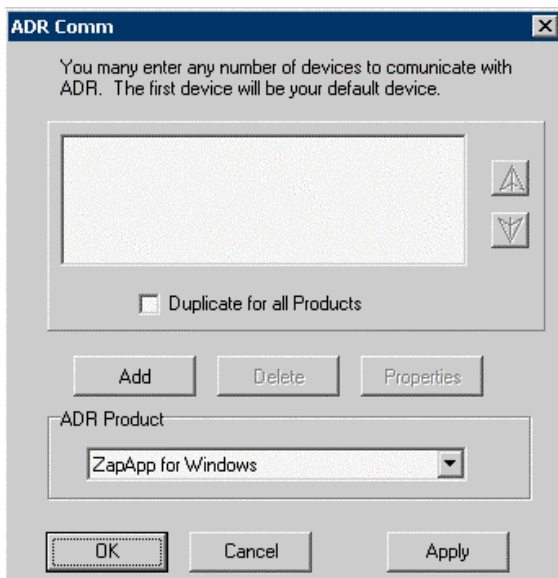
Once you have specified the location of your Rater, Click **Next** to Continue.



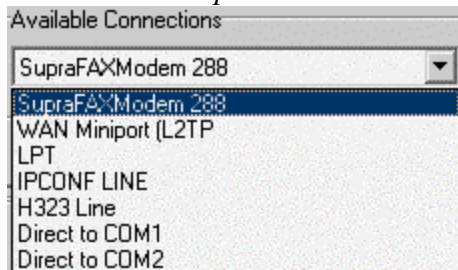
11. Setup will now copy the ZapApp® for Windows program files to the specified destination directory. During the copying to disk phase, you will be prompted to insert the rest of the diskettes. Insert each disk when you are prompted and click **Ok** to continue the installation process.
12. You will now be prompted to confirm your account information that will be installed to your ZapApp® for Windows program. If the information shown is incorrect, click **No**, and contact ADR Technical Support. If the information is correct, click **Yes** to continue.



13. The **ADR Communications** window will now appear. Click **Add** and select your method of communication with Zapwin.

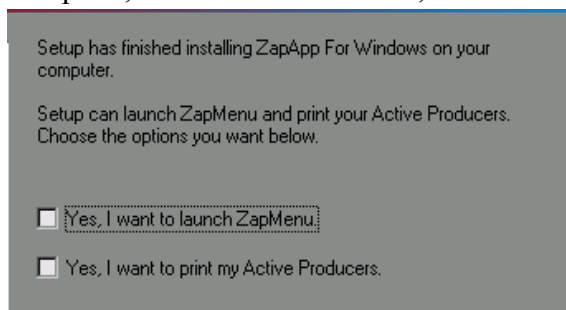


14. If you are going to connect via Modem, select **Modem** and click **Ok**. The next screen that appears will ask you to choose your modem. Click on the **drop down arrow** and select your modem. **Note: Your modem will always be the first option to choose from the list.** Click **Next** to continue. Click **Finish**. *Note: If you need to dial a number before you dial out enter it before the number listed, for example if a 9 is needed you would enter a 9, before the 1 in the Host Computer section.*



If you are connecting via **TCP/IP**, (DSL, T-1, Frame Relay, etc...), select **TCP/IP** and click **Ok**. The next screen that will display the correct default TCP/IP Address and Port. Click **Finish**.

15. Setup will display the screen below. If you want to open ZapMenu for Windows when the installation is complete, select **Yes**. Otherwise, leave the options unchecked and select **Finish**.



Installation is now complete!!

Part 2: Client – Connect to File Server Installation

After you have installed ZapApp® for Windows to the File Server, the Client – Connect to File Server installation must be performed on each individual workstation to ensure proper execution of the program. To perform the Client - Connect to File Server installation, follow these steps and take note of Step 5:

1. Follow the installation instructions in Part 1 until Setup prompts you to choose an installation type.
2. Select **Client – Connect to File Server** and click **Next**.
3. Setup will ask you to enter a user ID. This ID can be anything you want. The only restriction is that it must be unique. **No two computers on the network can have the same ZapApp® User ID.** When you have entered the User ID, click **Next** to continue.

4. Setup will continue the installation process. After confirming your account information, Setup will prompt you to enter the **location of the existing ZapApp® for Windows program**. *Setup will not install the program files to a directory that does not contain the ZapApp® for Windows program*. Select the location of the existing version of ZapApp® for Windows and click **Next** to continue.
5. Setup will continue the Client – Connect to File Server installation. For further installation instructions go to **Part 1, Step 10**. **You may notice that the Client - Connect to File Server installation only requires a certain amount of diskettes, this is normal.** When Setup has finished the Client – Connect to File Server installation, **you must repeat the process on each workstation on which you wish to operate the ZapApp® for Windows program.**
6. When you have completed the installation process to each workstation, store the software in a safe place in the event it becomes necessary to reinstall some or all of your program files.

If you have any further questions about the installation process or require assistance, please contact ADR's Technical Support Department at the number below.

American Driving Records

Phone: 916.456.3200 ext. 1 Fax: 916.456.3332

E-Mail: Support@mvr.com